

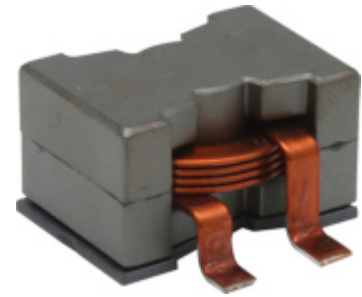
EEB26B

HIGH CURRENT POWER INDUCTOR

大电流功率电感

Features

- Susing flat wire, and SMD type.
采用扁平线，贴片类型
- Low radiation noise by magnetically shielded construction
闭合磁路封装，低辐射
- High current, Low resistance.
大电流，低电阻
- Operating temperature : -40°C~+125°C.
工作温度: -40°C~+125°C



Applications

- high efficiency DC/DC converters. 高效 DC/DC 转换器
- Single and polyphase buck converters. 单相、多相降压转换器
- Filter for audio applications. 音频滤波应用
- Optimized for high current boost applications. 大电流升压应用优化

Electrical characteristics

Part number 料号	Inductance 电感量 μH	DC resistance 直流电阻 mΩ max. (typ.)	DC saturation current 直流饱和电流 A max.(typ.)			Temperature rise current 温升电流 A max.	
			ΔL ≦ 10%	ΔL ≦ 20%	ΔL ≦ 30%	ΔT ≦ 20°C	ΔT ≦ 40°C
EEB26B-222	2.2 ± 20%	2.05(1.6)	100(>100)	>100 (>100)	>100 (>100)	20	30
EEB26B-332	3.3 ± 20%	2.05(1.6)	62.0(64.3)	66.9(68.6)	68.4(69.3)	20	30
EEB26B-472	4.7 ± 20%	2.05(1.6)	42.0(45.2)	48.0(49.7)	50.1(51.4)	20	30
EEB26B-682	6.8 ± 20%	2.05(1.6)	30.0(31.9)	34.5(36.0)	36.2(37.4)	20	30
EEB26B-103	10 ± 10%	2.05(1.6)	18.0(19.7)	21.5(23.0)	23.4(24.5)	20	30
EEB26B-153	15 ± 10%	2.05(1.6)	11.5(13.2)	14.0(15.3)	15.2(16.1)	20	30
EEB26B-223	22 ± 10%	2.05(1.6)	7.0(8.1)	8.6(9.2)	9.6(10.1)	20	30
EEB26B-333	33 ± 10%	2.05(1.6)	4.0(4.5)	5.1(5.5)	5.9(6.0)	20	30

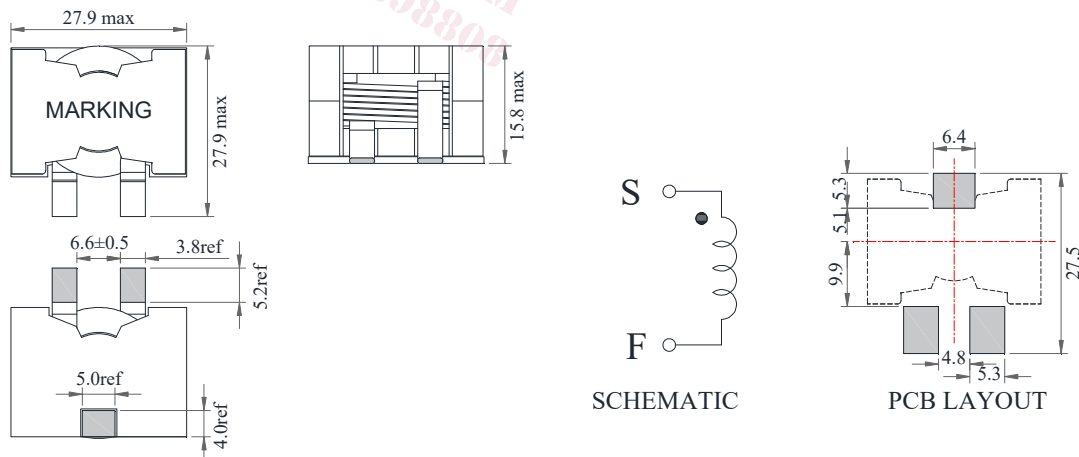
Remark

- Inductance is measured with a LCR meter 4284A or equivalent.
Test frequency at 100kHz
- DC resistance is measured with 16502 Milliohm Meter , or equivalent.
Reference ambient temperature 25°C

备注

- 电感量测试采用 4284A 数字电桥或同等仪器；
测试频率 100KHz
- 直流电阻测试采用 16502 毫欧表或同等仪器；
环境温度 25°C

Dimensions



Electrical Characteristic Curve

